

Draft 3.0

Course Program

June 7-8, 2025, 2nd Annual All-Georgia Workshop and Board Review for Cardiology and Radiology Trainees

10 AM to 4 PM, 2025, Rooms 312 and 313
Emory University School of Medicine, 100
Woodruff Circle, Atlanta, GA 30322

All New Cases
for 2025!

Sponsored by:

TERARECON
A ConcertAI Company

aidoc

HeartFlow[®]

 **GE HealthCare**

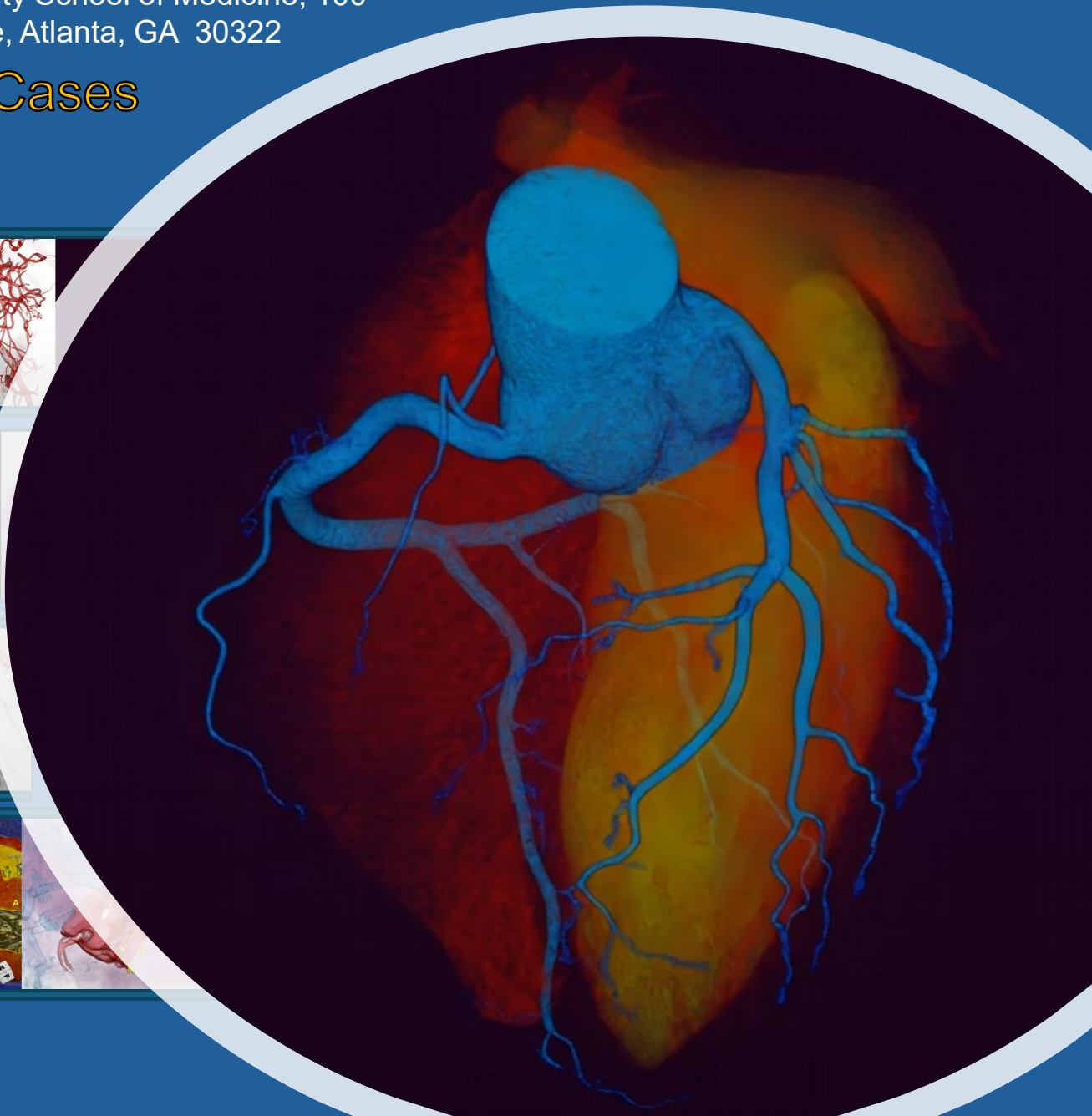


Table of Contents

Campus Map	Page 3
Faculty	Page 4
Pre-Course Assistance	Page 5
Workstation Instructions	Page 6
Schedule	Pages 7-8
Syllabus	Pages 9-10
Buttonology	Page 11
References	Pages 12-13
Suggested Texts	Page 14
Free Membership Link (inactive for now)	Page 15

Sponsors



TERAIRECON
A ConcertAI Company



aidoc



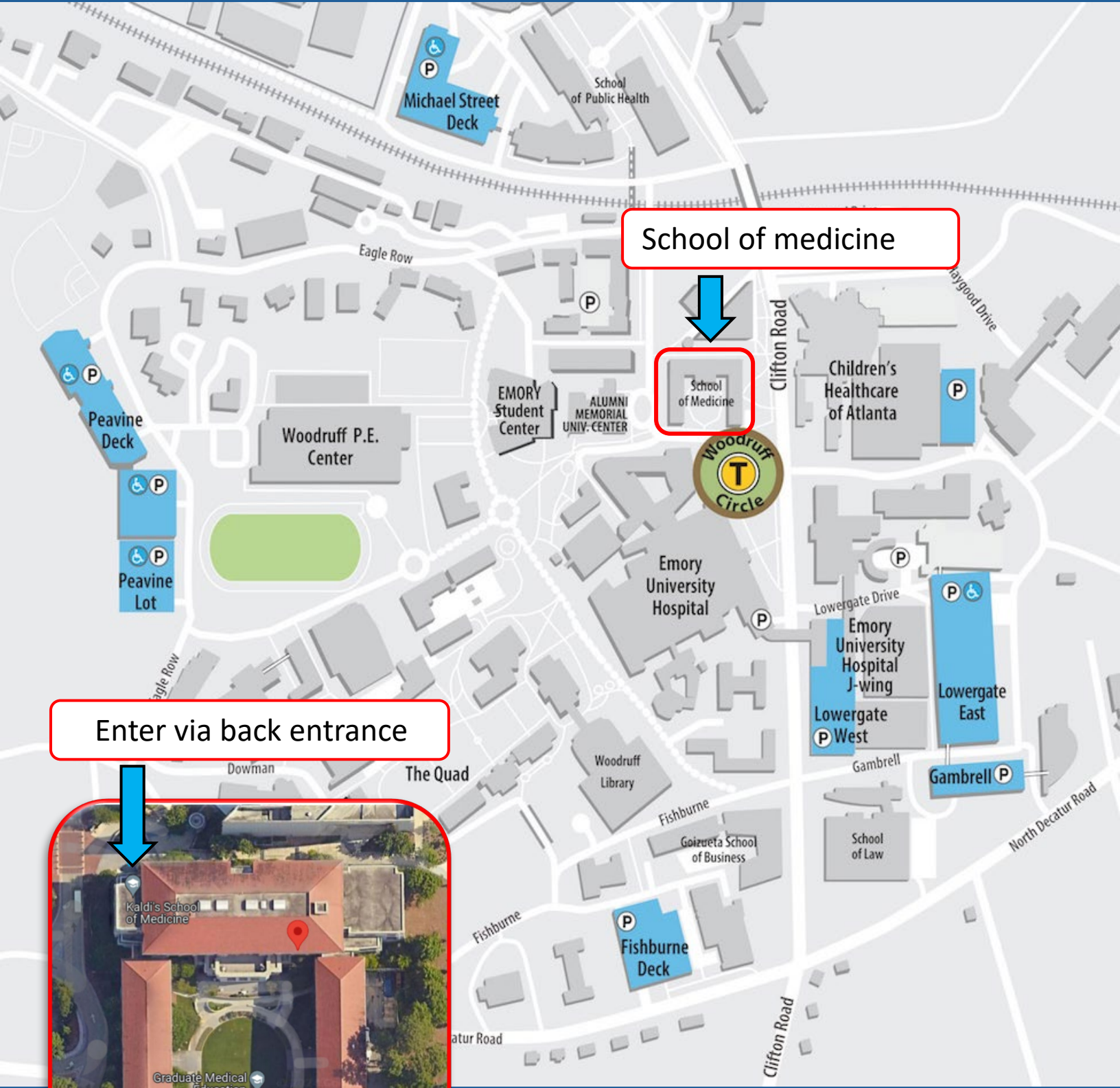
HeartFlow®



GE HealthCare

Campus map

For live help with directions you may call one of the course assistants:
David Kulp at 301-466-4762 or David Masotti at 860-899-6736.



Enter via back entrance



School of Medicine
Third floor, Room 312 and 313
100 Woodruff Circle
Atlanta, GA 30322

Parking (blue buildings on map) is free on weekends !

Course Chairs

J. Jeff Carr, MD, MSCCT, FACC, FAHA
Professor of Radiology, Biomedical Informatics, and Internal Medicine, Division of Cardiology, Vanderbilt University

Michael Winkler, MD, MSCCT, FACC, FICA
Professor of Radiology and Imaging Sciences, Division of Cardiothoracic Radiology, Emory University
michael.winkler@emory.edu

Faculty

Karin Dill, MD, FACR, FNASCI
Professor of Radiology and Imaging Sciences, Division of Cardiothoracic Radiology, Emory University

Stefan Tigges, MD
Professor of Radiology and Imaging Sciences, Division of Cardiothoracic Radiology, Emory University

William Bates, MD, FSCCT, FICA
Associate Professor of Radiology, Division of Cardiothoracic Radiology, and Internal Medicine, Division of Cardiovascular Medicine, Augusta University

Scott D. Jerome, DO, FACC, FASNC, FSCCT
Assistant Professor of Internal Medicine, Section of Cardiology, Director, Ambulatory Services and Outreach Cardiology, Co-Director, Sports Cardiology, University of Maryland

Joe Xie, MD, MSCR
Assistant Professor of Internal Medicine, Division of Cardiology, Emory University

Shalmali Dharmadhikari, PhD, DABR
Assistant Professor of Radiology and Imaging Sciences, Division of Medical Physics, Assistant Director of Medical Physics Imaging Residency, Emory University

Sponsors



TERARECON
A ConcertAI Company



aidoc



HeartFlow[®]



GE HealthCare

Cameron Henry, MD
Assistant Professor Radiology
Vanderbilt University

Danny Donovan, MD
Assistant Professor of Radiology
University of Tennessee Memphis

Walter Beard Jr, MD, FACC
Assistant Professor of Internal Medicine, Section of Cardiology
Associate Director of Cardiovascular Medicine Fellowship
Morehouse University

Mariana Garcia, MD
Assistant Professor, Internal Medicine, Section of Cardiology
Emory University

Emory Workstation Login Instructions (Day of course)

1. You will receive your username and password by email. They will also be available to the learners from the TeraRecon representative the day of the course.
2. Emory learners may log onto the laboratory workstations with their Emory NetIDs and passwords. All learners may use the generic School of Medicine account name *smtexam* and password: *smtex@m!*
3. Launch Intuition Viewer 6 (the TeraRecon software) using its desktop icon.
4. Parallels software, which provides the link to the TeraRecon server, will launch automatically.
5. Use the Intuition account name and password provided to you to log into the Intuition server.

Parallels and Thin Client Installation (for personal laptops)

Insert instruction here

Case Upload Instructions (Faculty only)

Case file upload links for faculty:

<https://terarecon.sharefile.com/r-rcaf5b9e8a38641ab9248625efa410d2b>

<https://iupload.cloud.terarecon.com/Login.aspx>

Important Contact Information

- To RSVP and for general questions email Michael Winkler, course director, at michael.winkler@emory.edu
- For directions on the day of the course call David Kulp, course assistant, at 301-466-4762 or David Massoti, course assistant, at 860-899-6736.
- For Intuition (TeraReconAI) pre-course virtual machine and remote client installation help email Amanda Jung at ajung@terarecon.com

Schedule: June 7th

9:30 Breakfast

10:00 Buttonology; Cases 1-3

Michael Winkler, MD

10:30 Patient Selection; Cases 4-6

Scott Jerome, DO

11:00 Patient Preparation; Cases 7-9

Mariana Garcia, MD

11:30 Scanner Technical Factors; Cases 10-12

Shalmali Dharmadhikari, PhD, Michael Winkler, MD

12:00 Lunch Panel: Standardized Reporting for CCT

Drs. Jerome, Garcia and Bill Bates

13:00 Coronary Arteries & Cardiac Veins; Cases 13-15

Stephan Tigges, MD

13:30 Pulmonary Arteries and Aorta; Cases 16-18

Michael Winkler, MD

14:00 Thoracic Radiology Part 1; Cases 19-21

Cameron Henry, MD

14:30 Thoracic Radiology Part 2; Cases 22-25

Danny Donovan, MD

15:00 Mini Mock Exam and Answer Session 1

Stephan Tigges, MD; Cameron Henry, MD

16:00 Adjourn/Open Lab Period/Catch-up and Additional Cases

18:00 Lab closes

Schedule June 8th

9:30 Breakfast

10:00 FFRCT and Plaque Characterization; Cases 26-28

J. Jeff Carr, MD

10:30 Contrast and Power Injection; Cases 29-31

Scott Jerome, DO

11:00 Image Reconstruction; Cases 32-34

Michael Winkler, MD

11:30 Post-Processing Techniques; Cases 35-37

Michael Winkler, MD

12:00 Lunch Panel: Psychometrics of MCQs

Drs. Winkler and Carr

13:00 Artifacts & Problem Solving; Cases 38-40

J. Jeff Carr, MD

13:30 Valves and Chambers; Cases 41-43

14:00 TAVR; Cases 44-46

J. Jeff Carr, MD

14:30 TMVR & LAA; Cases 47-50

Joe Xie, MD

15:00 Mini Mock Exam and Answer Session 2

Drs. Carr and Winkler

16:00 Adjourn/Open Lab Period/Catch-up and Additional Cases

17:00 Lab closes

“Intuition Buttonology” (i.e. Keyboard Shortcuts and Mouse Controls)

Keyboard Shortcuts for Volume Dataset Positions & Projections:

- A = Anterior
- P = Posterior
- R = Right Lateral
- L = Left Lateral
- F = Axial (From Foot)
- H = Axial (From Head)
- G = Perpendicular view (will be on anatomy in the center of crosshairs)
- Q=Cube View

Mouse Controls:

- W/L = Right +Left mouse
- Zoom In = Middle mouse depress & hold + push entire mouse forward
- Zoom Out = Middle mouse depress & hold + pull entire mouse back
- Pan = right mouse hold and drag
- Slice or page through volume data set = middle + right mouse
- Page through MPR's = left mouse
- Isocenter from 2D: Alt + left click on area of interest & will center all planes
- Isocenter on 3D view = Alt + left click OR middle mouse depress and release on area of interest

Keyboard Window/Level Presets

(Presets 1-5 can be edited to site or user specific WW/WL settings)

- 1-2 = Abd
- 3 = Head
- 4 = Lung
- 5 = Bone
- 6-9 = CTA

Changing the Main View:

- F2 = 3D VR
- F3 = MPR
- F4 = MIP

Tool Short Cuts:

- F5 = Dynamic Region Grow Tool
- F6 = Free ROI Tool
- F7 = CPR Tool
- F8 = Batch Wizard Tool

Measurements & Captures:

- D = Distance
- E = Ellipse (ROI)
- C = Capture
- X = Crosshairs on/off







Capture

C = Capture **Ctrl** + **Shift** + **C** = Capture All
Ctrl + **S** = Save image to a predefined folder


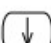
Measure

D = Distance **E** = Ellipse
I = Profile **Delete** = Delete selected measurement

Mouse Operations

 = Rotate  = Pan
 = Zoom  = Slice (volume)
 = Slice (MPR)  = W/L

Orientation

A = Anterior **M** = Arrow, Label, Text Arrow
F = Feet **O** = LAO, RAO
H = Head **P** = Posterior
L = Left **R** = Right
T = Text
 = Rotate up by X degree **<-** = Rotate to left by X degrees
 = Rotate down by X degree **->** = Rotate to right by X degrees

Batch

F8 = 2D Wizard

Cube View

Q = Cube View

Syllabus

- Patient Selection:

- Chest Pain Guidelines,
- Contraindications,
- Alternative Examinations,
- Calcium Scoring

- Patient Preparation:

- **Pharmacological Preparation** (Beta Blockers, Ivabradine, Calcium Channel Blockers, Nitroglycerin, Benzodiazepines, Drug Contraindications),
- **Nonpharmacological Preparation** (Oxygen, Hydration, Warm Blankets, Positioning, Coaching, Desensitization to Scanner),
- **Contrast Reactions**

- Coronary Arteries and Cardiac Veins:

- **Coronary Arteries** (Segmental Anatomy, Common and Significant Branches, Vascular Territories, Anomalies)
- **CAD-RADS 2.0** (Stenoses, Plaque, Remodeling, Occlusions, Stents, Bypass Grafts)
- **Cardiac Veins** (Nomenclature, Variants, Relevance)

- FFRCT and Plaque Characterization:

- Science
- Implementation
- Interpretation

- Valves and Chambers:

- **Valves** (anatomy, pathology, planimetry)
- **Chambers** (anatomy, pathology, cardiac function)
- **Septa**
- **Myocardium**
- **Cardiac Tumors**

- Pulmonary and Systemic Vessels:

- **Pulmonary Arteries** (Anatomy, Pulmonary Hypertension, Pulmonary Embolus, AI Analysis)
- **Pulmonary Veins** (Anatomy, Anomalies, Pathology)
- **Aorta** (Anatomy, Aneurysm, Dissection, Hematoma, AI Analysis)
- **Great arteries** (Variants, Pathology)
- **Central veins** (Variants, Pathology)

- Thoracic Radiology:

- **Mediastinum** (Adenopathy, Esophageal Thickening And Dysmotility, Aortic Aneurysm, Dissection, and Hematoma)
- **Fleischner Society Guidelines** (solid, ground glass, atypical nodules)
- **Lungs**(Atelectasis, Small Airway Disease, Infarcts, Pneumonia, Pleural Thickening and Effusion)
- **Abdomen** (Cirrhosis, Varices, Adrenal and Renal Masses, Pancreatitis)

Syllabus (cont.)

- **Scanner Technical Factors:**
 - **Injector**(Contrast Media, Venous Access, Injection Protocols)
 - **Scanner** (kVp, mAs, Pitch, Mode, detector types and geometries)
- **Gating and Triggering:**
 - **Explanation**
 - **Mode Selection**
 - **Dose Reduction**
- **Image Reconstruction:**
 - **Filtered Back Projection**
 - **Contrast Resolution**
 - **Spatial Resolution** (Storage Matrix, DisplayedField of View, Slice Thickness, Slice Interval)
 - **Noise** (Signal to Noise Ratio, Noise Spectrum, Kernels, Iterative Reconstruction, AI Reconstruction)
- **Post-Processing Techniques:**
 - **Image Enhancement** (Interpolation, Noise Reduction, Frame Averaging)
 - **Two Dimensional Reformats** (MPR, MIP, minIP, avMPR, Stretched CPR, Straightened CPR, MAR)
 - **Three Dimensional Reformats** (Surface Rendering, Ray Casting, Ray Tracing)
- **Artifacts and Problem Solving:**
- **Motion Artifacts** (Gross Motion, Breathing, Arrythmia)
 - **Technical Artifacts** (Beam Hardening, Streak, Photon Starvation, Detector Element)
 - **Signal Processing Artifacts** (Interpolation, Noise Reduction, Reformatting)
- **Transcatheter Aortic Valve Repair:**
 - **Pre and Post TAVR Scanning Protocols**
 - **TAVR planning workflow**
- **Transcatheter Mitral Valve Repair and Left Atrial Appendage Exclusion:**
 - **TMVR** (Scanning Protocol, planning workflow)
 - **LAA** (Scanning Protocol, Planning Workflow)
- **Psychometrics of Multiple Choice Question Examinations:**
 - **CBCCT Exam** (the Certification Board of Cardiovascular Computed Tomography)
 - **EACVI-CCT Online Certification Exam** (the European Association of Cardiovascular Imaging Cardiac Computed Tomography)

Important References (open access)

Coronary Computed Tomographic Angiography

- Koweek et al. Standardized medical terminology for cardiac computed tomography 2023 update. J Cardiovasc Comput Tomogr. 2023. <https://www.journalofcardiovascularct.com/action/showPdf?pii=S1934-5925%2823%2900389-1>
- Gulati et al. 2021 AHA/ACC/AASE/CHEST/SAEM/SCCT/SCMR Guideline for the Evaluation and Diagnosis of Chest Pain: Executive Summary: A Report of the American College of Cardiology/American Heart Association Joint Committee on Clinical Practice Guidelines. Circulation 2021. <https://www.ahajournals.org/doi/epub/10.1161/CIR.0000000000001030>
- Cury et al. CAD-RADS™ 2.0 - 2022 Coronary Artery Disease - Reporting and Data System An Expert Consensus Document of the Society of Cardiovascular Computed Tomography (SCCT), the American College of Cardiology (ACC), the American College of Radiology (ACR) and the North America Society of Cardiovascular Imaging (NASCI). Radiol Cardiothorac Imaging 2022. <https://www.ncbi.nlm.nih.gov/pmc/articles/PMC9627235/pdf/ryct.220183.pdf>
- Hecht et al. CAC-DRS: Coronary Artery Calcium Data and Reporting System. An expert consensus document of the Society of Cardiovascular Computed Tomography (SCCT). JCCT 2018. <https://www.journalofcardiovascularct.com/action/showPdf?pii=S1934-5925%2818%2930058-3>
- Nieman et al. Standards for quantitative assessments by coronary computed tomography angiography (CCTA): An expert consensus document of the society of cardiovascular computed tomography (SCCT). J Cardiovasc Comput Tomogr. 2024. https://cdn.ymaws.com/scct.org/resource/resmgr/docs/guidelines/Garcia-Garcia-Nieman_QA_Expe.pdf
- Gentile et al. Coronary Artery Anomalies. Circulation. 2021 <https://www.ahajournals.org/doi/epub/10.1161/CIRCULATIONAHA.121.055347>
- Boppana et al. Atrial Coronary Arteries: Anatomy And Atrial Perfusion Territories. J Atr Fibrillation. 2011 <https://www.ncbi.nlm.nih.gov/pmc/articles/PMC5153018/pdf/jafib-04-00375.pdf>

Important References cont. (open access)

Cardiac CT for Planning of Structural Heart Interventions and Surgeries

- Achenbach et al. SCCT expert consensus document on computed tomography imaging before transcatheter aortic valve implantation (TAVI)/transcatheter aortic valve replacement (TAVR). JCCT 2012. https://cdn.ymaws.com/scct.org/resource/resmgr/Docs/Fellows&Residents_of_SCCT/Guidelines_TAVI_TAVR.pdf
- Cheung A, Webb JG. Multislice computed tomography for prediction of optimal angiographic deployment projections during transcatheter aortic valve implantation. JACC Cardiovasc Interv. 2010. <https://www.sciencedirect.com/science/article/pii/S1936879810006461>
- Tang et al. "Cusp-Overlap" View Simplifies Fluoroscopy-Guided Implantation of Self-Expanding Valve in Transcatheter Aortic Valve Replacement. JACC Cardiovasc Interv 2018. <https://www.sciencedirect.com/science/article/pii/S1936879818307416>
- Cardiac Interventions Today 2021 Cusp Overlap Special Supplement https://assets.bmctoday.net/citoday/pdfs/cit0121_Supp_MDT_combined.pdf
- Nai et al. Anatomical Predictors of Pacemaker Dependency After Transcatheter Aortic Valve Replacement. Circ Arrhythm Electrophysiol 2021. <https://www.ahajournals.org/doi/full/10.1161/CIRCEP.120.009028>
- Khalique et al. Quantity and location of aortic valve complex calcification predicts severity and location of paravalvular regurgitation and frequency of post-dilation after balloon-expandable transcatheter aortic valve replacement. JACC Cardiovasc Interv 2014. <https://www.sciencedirect.com/science/article/pii/S1936879814008462>
- Ranganath et al. CT for Pre- and Postprocedural Evaluation of Transcatheter Mitral Valve Replacement. Radiographics 2020. <https://pubs.rsna.org/doi/10.1148/rg.2020200027>
- Yoon et al. Predictors of Left Ventricular Outflow Tract Obstruction After Transcatheter Mitral Valve Replacement. JACC Cardiovasc Interv 2019. <https://www.sciencedirect.com/science/article/pii/S1936879818324233>
- Rajiah et al. Pre- and Postprocedural CT of Transcatheter Left Atrial Appendage Closure Devices. Radiographics 2021. <https://pubs.rsna.org/doi/epdf/10.1148/rg.2021200136>

Important References cont. (open access)

Artificial Intelligence for Cardiovascular Imaging

- Wu et al. Non-invasive imaging innovation: FFR-CT combined with plaque characterization, safeguarding your cardiac health. JCCT 2025. <https://www.journalofcardiovascularct.com/action/showPdf?pii=S1934-5925%2824%2900433-7>
- Langius-Wiffen et al. Retrospective batch analysis to evaluate the diagnostic accuracy of a clinically deployed AI algorithm for the detection of acute pulmonary embolism on CTPA. Insights into imaging 2023. <https://insightsimaging.springeropen.com/articles/10.1186/s13244-023-01454-1>

Certification Examinations and Psychometrics

- Certification Board of Cardiovascular Computed Tomography (CBCCT) Cardiovascular Computed Tomography Examination Content Outline Summary. <https://www.apca.org/wp-content/uploads/pdf/CCT-Content-Outline-1.pdf>
- EACVI Cardiac CT Core Syllabus. https://www.escardio.org/static-file/Escardio/Education-Subspecialty/Certification/EACVI/Certification/CT/EACVI_CCT_Core_Syllabus.pdf

Contrast Media

- ACR Manual on Contrast Media 2024. <https://www.acr.org/Clinical-Resources/Clinical-Tools-and-Reference/Contrast-Manual>
- Davenport et al. Use of Intravenous Iodinated Contrast Media in Patients With Kidney Disease: Consensus Statements from the American College of Radiology and the National Kidney Foundation. Kidney Med. 2020. [https://www.kidneymedicinejournal.org/article/S2590-0595\(20\)30002-9/fulltext](https://www.kidneymedicinejournal.org/article/S2590-0595(20)30002-9/fulltext)

Miscellaneous References

- Kassem et al. Cardiac veins, an anatomical review. Translational Research in Anatomy, 2021 <https://www.sciencedirect.com/science/article/pii/S2214854X20300352>
- MacMahon et al. Guidelines for Management of Incidental Pulmonary Nodules Detected on CT Images: From the Fleischner Society 2017. Radiology. 2017 <https://pubs.rsna.org/doi/epdf/10.1148/radiol.2017161659>

Recommended Texts (low cost!)

Beginner Cardiovascular CT

- Cardiac CT Made Easy: An Introduction to Cardiovascular Multidetector Computed Tomography 3rd Edition Paul Schoenhagen, Frank Dong

Board Review

- EACVI Handbook of Cardiovascular CT (The European Society of Cardiology Series), Oliver Gaemperli, Pál Maurovich-Horvat, Koen Nieman, Gianluca Pontone, Francesca Pugliese



SCCT would like to thank the course sponsors for offering all of today's participants FREE SCCT membership for one year.

FOR FREE MEMBERSHIP



Use the promo code: **TRGA25**

Offer expires: June 30, 2025

+1.703.766.1706

 scct.org

 info@scct.org